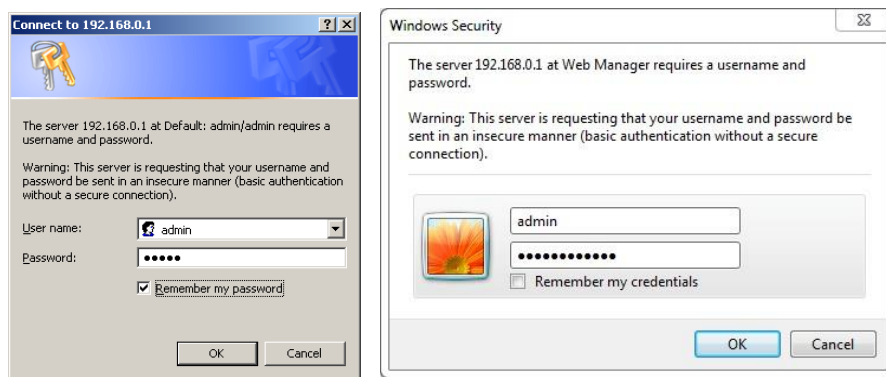


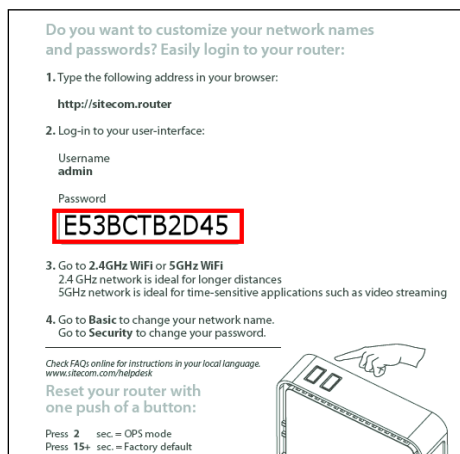
I have Internet access via the modem, but not via my router. What can I do?

It is possible that the modem has saved the details of the connected computer. It may also be the case that additional details are required in order to set up an Internet connection. We advise you to check the status in the router's Settings menu (Graphical User Interface). The device (desktop PC, notebook, tablet) you use to access the Settings menu must be connected to the router. This can be either a wired or a wireless connection. Carry out the following steps:

1. Open a web browser, such as Internet Explorer or Safari.
2. Type the following address in the address bar <http://sitecom.router> (or <http://192.168.0.1>) and press **Enter**.



3. Log in with your username and password. For the user name, enter "admin" (lowercase). The password can be found on the bottom of the router or in the **Network Login Details** flyer that may have been supplied with it.



4. Select Internet **Settings**. With some routers, you can choose between IPv4 and IPv6 connectivity. Select the IPv4 connection by clicking on the **IPv4** tab.



Wi-Fi Router X6 N900



Status | **Internet Settings** | 2.4GHz WiFi | 5GHz WiFi | Firewall | Advanced Settings | Toolbox | Choose your language ▾

IPv4 Settings

Use this section to configure your IPv4 Connection type. If you are unsure of your connection method, please contact your Internet Service Provider.

IPv4 Connection Type

Choose the IPv4 mode to be used by the router for the internet connection.

Login Method :	Dynamic IP Address ▾
Hostname :	<input type="text"/>
MAC Address :	000000000000 <input type="button" value="Clone MAC address"/>

5. For **Login Method**, **Dynamic IP Address** should be selected.
6. Enter the **Hostname and the MAC address**, which you can copy from your computer. Make sure you copy the details from a computer with which you have an Internet connection, if you are connected directly to the modem.
7. Click on **Apply** to save the changes.